



# **RHINO** **TUFF TANKS**

**STACKABLE STORAGE &  
DISPENSING SYSTEM**



# WHIP YOUR SHOP INTO SHAPE

## WITH STACKABLE FLUID STORAGE AND DISPENSING SYSTEMS



SCAN ME

Rhino Tuff Tanks stackable tank systems eliminate the hassles of handling 55 gallon drums. Organize your bulk fluid inventory and maximize valuable floor space by stacking multiple fluids vertically. Available in a variety of tank sizes, combinations and packages all Rhino Tuff Tanks are designed with a 36" footprint that allows them to be stacked in any combination without needing conversion brackets. Combine with an array of accessories to create your own unique storage and dispensing system. Systems have been certified as compliant with UL-2152 testing standards and bear the markings as such. Superior tank design, tough RotoMolded construction and heavy duty components, Rhino Tuff Tanks offer you the Total Tank Package!

For over 14 years, Rhino Tuff Tanks has been a manufacturer of premium rotationally-molded stackable tanks and fluid handling equipment. Today we operate out of more than 285,000 sq ft of manufacturing and warehouse facilities in beautiful Maple Lake, MN. We take pride in conducting business with integrity by holding ourselves accountable to you, our customer in all areas of value: quality, service and reliability. Striving to make our word more than just a promise, our mission is to be the stackable tank and fluid handling equipment brand of choice.

### Not Just Tough, RHINO TUFF!



BEFORE



AFTER



BEFORE



AFTER

**RHINO TUFF TANKS**  
RUGGED • ORGANIZED • EFFICIENT





**RHINO  TUFF TANKS**

# STACKABLE TANKS



Rhino Tuff Tanks space saving design allows individual tank sizes to be stacked in any combination and eliminates the hassles of handling 55 gallon drums. Stackable Tanks are designed with a 36" x 36" footprint that allows them the ability to be interchangeably stacked together with no conversion brackets required. All tanks are constructed of High Density Polyethylene (HDPE) for optimum surface clarity, UV

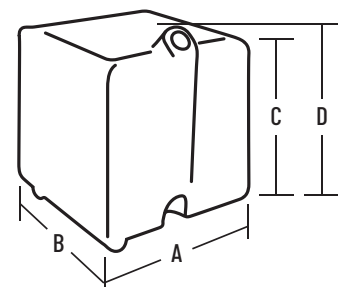
stabilization and superior environmental stress crack resistance (ESCR). Rhino Tuff Tanks provide a clean, stable, contamination-free container that will not rust or corrode - protecting your fluids from the environment. Combine with an variety of accessory options to create your own unique fluid storage and dispensing system.



- CONVENIENT 2" NPT CENTER FILL OPENING
- TWO 2" NPT CORNER TOP OPENINGS FOR PUMP OR VENT APPLICATION
- 1" SIDE OPENING FOR DESICCANT BREATHER OR REMOTE FILL
- MOLDED-IN METAL 5/16-18" INSERTS FOR MOUNTING ACCESSORIES
- VERTICAL RIB DESIGN TO MINIMIZE WALL DEFLECTION
- 2 X MOLDED-IN #304 STAINLESS STEEL 1" NPT DRAIN BUSHINGS
- SEE EXACT FLUID LEVELS - SEMI TRANSPARENT TANK WITH INTEGRATED VOLUME LEVEL INDICATORS
- INTERLOCKING TOP & BOTTOM RIDGES FOR SECURE STACKING
- SERIALIZED UL GRAPHIC, IDENTIFICATION LABEL AND WARNING LABEL



MODEL NO.	PART NO.	DESCRIPTION	EMPTY WEIGHT	DIMENSIONS			HEIGHT INCLUDING FILL PORT - D
				A	B	C	
RTT-1010	500216	45 Gallon Tank	30 lbs.	36" L	36" W	10" H	14" H
RTT-1110	500146	80 Gallon Tank	45 lbs.	36" L	36" W	18" H	22" H
RTT-1210	500148	120 Gallon Tank	65 lbs.	36" L	36" W	27" H	31" H
RTT-1310	500149	180 Gallon Tank	95 lbs.	36" L	36" W	39" H	43" H
RTT-1410	500150	225 Gallon Tank	150 lbs.	36" L	36" W	49" H	53" H
RTT-1510	500172	310 Gallon Tank	200 lbs.	38" L	38" W	66" H	70" H





**RHINO  TUFF TANKS**

# GRAVITY FEED TANK PACKAGES

Rhino Tuff Tanks offers several complete Gravity Feed Systems with one convenient model number.



RTT-6320-NV  
500389  
with  
RTT-4001  
500134  
Valves

**ALL PACKAGES INCLUDE:**

STACKABLE TANKS

ACCESSORIES - BARBED FITTINGS, BRAIDED TUBING, HOSE CLAMPS, THREAD SEALANT AND INDUSTRIAL TUB-O-TOWEL

RTT-2100 STAND KIT WITH 24" LEGS

RTT-3200 DRIP TRAY KIT WITH 4 INSERT PANS AND SCREENS

**VALVES ARE SOLD SEPARATELY TO ACCOMMODATE SPECIFIC NEEDS  
SEE ALL AVAILABLE ACCESSORIES ON PAGES 15-18**

Photos shown with optional  
RTT-4001 500134 Valve, Sold Separately



RTT-6111-NV  
500380



RTT-6222-NV  
500388



RTT-6400-NV  
500393

**RTT-4036-NL 500556**

Ball Valves on each tank outlet adds another level of safety to your Gravity Feed Tank Package.



Valves are sold separately see Accessories Page 15-18

SYSTEMS DO NOT INCLUDE DISPENSING VALVES. SEE AVAILABLE OPTIONS ON PAGE 16

MODEL NO.	PART NO.	DESCRIPTION	MODEL NO.	PART NO.	DESCRIPTION	MODEL NO.	PART NO.	DESCRIPTION
RTT-6000-NV	500377	45 Gallon System	RTT-6330-NV	500384	80/80 Gallon System	RTT-6800-NV	500390	180 Gallon System
RTT-6100-NV	500378	45/45 Gallon System	RTT-6332-NV	500469	80/80/120 Gallon System	RTT-6280-NV	500391	120/180 Gallon System
RTT-6110-NV	500379	45/45/45 Gallon System	RTT-6333-NV	500385	80/80/80 Gallon System	RTT-6880-NV	500392	180/180 Gallon System
RTT-6111-NV	500380	45/45/45/45 Gallon System	RTT-3333-NV	500386	80/80/80/80 Gallon System	RTT-6400-NV	500393	225 Gallon System
RTT-6130-NV	500381	45/80 Gallon System	RTT-6200-NV	500399	120 Gallon System	RTT-6420-NV	500394	120/225 Gallon System
RTT-6120-NV	500382	45/120 Gallon System	RTT-6220-NV	500387	120/120 Gallon System	RTT-6481-NV	500395	45/80/225 Gallon System
RTT-6300-NV	500383	80 Gallon System	RTT-6222-NV	500388	120/120/120 Gallon System	RTT-6500-NV	500396	310 Gal. Double Ring System
RTT-6322-NV	500470	80/120/120 Gallon System	RTT-6320-NV	500389	80/120 Gallon System			

# PUMP SYSTEMS

Pump Systems provide versatile options for clean, convenient and accurate dispensing from the tank, directly to your equipment. Side mount systems are compatible with Rhino Tuff's stackable tanks. All Side Mount and Top Mount Pump Systems are assembled at the factory. Wall Mount Systems are shipped unassembled.

## INCLUDES:

PUMP, 50' HOSE REEL, DISPENSING METER, AIR REGULATOR

MOUNTING PLATES, BRACKETS, HARDWARE, DESICCANT AIR BREATHER

VISIT [WWW.RHINOTUFFTANKS.COM](http://WWW.RHINOTUFFTANKS.COM) FOR ADDITIONAL PUMP SYSTEMS

SEE ALL AVAILABLE ACCESSORIES ON PAGES 15-18



RTT-1202 500440  
Side Mount  
Standard Duty  
3:1 Pump Package  
(Tank and Stand  
Sold Separately)



RTT-1941 500475 - Side Mount 3/4" Diaphragm Pump  
Package (Tank and Stand Sold Separately)

## COMPLETE PNEUMATIC PISTON PUMP PACKAGES - SIDE MOUNT

MODEL NO.	PART NO.	DESCRIPTION
RTT-1202	500440	Pump Package Side Mount 3:1 LD - Non-Preset EM-8 Meter
RTT-1202-P	500441	Pump Package Side Mount 3:1 LD - Preset LD Meter
RTT-1252	500442	Pump Package Side Mount 5:1 LD - Non-Preset EM-8 Meter
RTT-1252-P	500443	Pump Package Side Mount 5:1 LD - Preset LD Meter
RTT-1902	500444	Pump Package Side Mount 3:1 Fireball - Non-Preset EM-8 Meter
RTT-1902-P	500445	Pump Package Side Mount 3:1 Fireball - Preset LD Meter
RTT-1902-SD	500446	Pump Package Side Mount 3:1 Fireball - Non-Preset SD Meter
RTT-1902-SDP	500447	Pump Package Side Mount 3:1 Fireball - Preset SD Meter
RTT-1952	500487	Pump Package Side Mount 5:1 Fireball - Non-Preset EM-8 Meter
RTT-1952-P	500488	Pump Package Side Mount 5:1 Fireball - Preset LD Meter
RTT-1952-SD	500482	Pump Package Side Mount 5:1 Fireball - Non-Preset SD Meter
RTT-1952-SDP	500483	Pump Package Side Mount 5:1 Fireball - Preset SD Meter

## COMPLETE DIAPHRAGM PUMP PACKAGES - SIDE MOUNT

MODEL NO.	PART NO.	DESCRIPTION
RTT-1941	500475	Pump Package Side Mount 3/4" Dpm - Non-Preset EM-8 Meter
RTT-1941-P	500476	Pump Package Side Mount 3/4" Diaphragm - Preset LD Meter
RTT-1941-N	500477	Pump Package Side Mount 3/4" Dpm - Non-Metered SD Dispenser
RTT-1945	500478	Pump Package Side Mount 3/4" Diaphragm - Farm Nozzle** **50' Hose Reel Replaced With 3/4" X 8' Dispensing Hose



# PUMP SYSTEMS



RTT-1901 500438 - Top Mount Heavy Duty 3:1 Pump Package (Tank and Stand Sold Separately)

## COMPLETE PNEUMATIC PISTON PUMP PACKAGES - TOP MOUNT

MODEL NO.	PART NO.	DESCRIPTION
RTT-1101	500434	Pump Package Top Mount LD 3:1 - Non-Preset EM-8 Meter
RTT-1101-P	500435	Pump Package Top Mount LD 3:1 - Preset LD Meter
RTT-1151	500436	Pump Package Top Mount LD 5:1 - Non-Preset EM-8 Meter
RTT-1151-P	500437	Pump Package Top Mount LD 5:1 - Preset LD Meter
RTT-1901	500438	Pump Package Top Mount Fireball 3:1 - Non-Preset EM-8 Meter
RTT-1901-P	500439	Pump Package Top Mount Fireball 3:1 - Preset LD Meter



RTT-1903-P 500453 - Wall Mount Heavy Duty Pump Package

## COMPLETE PNEUMATIC PISTON PUMP PACKAGES - WALL MOUNT

MODEL NO.	PART NO.	DESCRIPTION
RTT-1303-P	500449	Pump Package Wall Mount 3:1 LD - Preset LD Meter
RTT-1353	500450	Pump Package Wall Mount 5:1 LD - Non-Preset EM-8 Meter
RTT-1353-P	500451	Pump Package Wall Mount 5:1 LD - Preset LD Meter
RTT-1903	500452	Pump Package Wall Mount 3:1 Fireball - Non-Preset EM-8 Meter
RTT-1903-P	500453	Pump Package Wall Mount 3:1 Fireball - Preset LD Meter



RTT-1988 500507 - Evacuation 3/4" Diaphragm Pump Package (Tank and Stand Sold Separately)

## EVACUATION SYSTEM

MODEL NO.	PART NO.	DESCRIPTION
RTT-1988	500507	Pump Package Side Mount 3/4" Diaphragm - Evacuation

Transfer fluids from drum or other tank into an RTT stackable unit

### INCLUDES:

PUMP, 36" ALUMINUM DOWN TUBE WITH 8' SUCTION HOSE, HOSE HANGER

Y STRAINER, BALL VALVE, BREATHER CAP, MOUNTING PLATES, BRACKETS AND HARDWARE

Create a custom pump dispensing system specific to your needs by using RTT's universal mounting plates and brackets. (sold separately see Accessories Pages 15-18).

# PORTABLE DEF - CHEMICAL

Transport and dispense fluids, including DEF and a wide variety of other chemicals safely within a closed system unit. Dispensing equipment is protected from environmental conditions inside compartment with lockable hinged lid.

## ALL DEF TANK ASSEMBLY WITH LIDS INCLUDE:

LOCKABLE HINGED LID FOR SECURITY

MOLDED-IN TIE DOWN CORNERS FOR SECURE TRANSPORT

SEMI-TRANSPARENT TANK WITH INTEGRATED VOLUME LEVEL INDICATORS FOR SEEING EXACT FLUID LEVELS

TWO 2" NPT OPENINGS

FOUR 1/4 - 20 SS INSERTS FOR PUMP MOUNT

RTT-7620  
500394  
120 Gallon  
DEF Tank/Lid



## PORTABLE DEF BARE TANK ASSEMBLY WITH LID (NO PUMP SYSTEM)

MODEL NO.	PART NO.	DESCRIPTION	DIMENSIONS
RTT-7580	500298	80 Gallon DEF Tank/Lid	36" L x 36" W x 27" H
RTT-7620	500394	120 Gallon DEF Tank/Lid	36" L x 36" W x 36" H
RTT-7730	500367	180 Gallon DEF Tank/Lid	36" L x 36" W x 45" H



**RHINO TUFF TANKS**

# PORTABLE DEF - CHEMICAL

## PORTABLE DEF SYSTEMS INCLUDE:

SS AUTOMATED SHUT-OFF NOZZLE  
WITH SWIVEL AND NOZZLE SUPPORT

DEF PUMP (7-9 GPM)

POLY RSV INLET AND OUTLET VALVE  
WITH TAMPER EVIDENT ZIP TIE

3/4" X 20' DISPENSING HOSE

Enclosed, organized and safe chemical storage.



**RTT-7120  
500334**  
120 Gallon Portable  
DEF System  
12V DC Pump



**RTT-7120-AC  
500603**  
120 Gallon Portable  
DEF System  
120V AC Pump



**RTT-7120  
500334**  
Shown with  
Optional  
**RTT-4444  
500225**

## PORTABLE DEF SYSTEM WITH 12V DC PUMP

MODEL NO.	PART NO.	DESCRIPTION	DIMENSIONS
RTT-7080	500333	80 Gallon Portable DEF System 12V DC Pump	36" L x 36" W x 27" H
RTT-7120	500334	120 Gallon Portable DEF System 12V DC Pump	36" L x 36" W x 36" H
RTT-7180	500398	180 Gallon Portable DEF System 12V DC Pump	36" L x 36" W x 48" H

## PORTABLE DEF SYSTEM WITH 120V AC PUMP WITH POWER CORD

MODEL NO.	PART NO.	DESCRIPTION	DIMENSIONS
RTT-7080-AC	500602	80 Gallon Portable DEF System 120V AC Pump with Power Cord	36" L x 36" W x 27" H
RTT-7120-AC	500603	120 Gallon Portable DEF System 120V AC Pump with Power Cord	36" L x 36" W x 36" H
RTT-7180-AC	500604	180 Gallon Portable DEF System 120V AC Pump with Power Cord	36" L x 36" W x 48" H

RTT's DEF Accessories simplify readability and mobility  
(sold separately see Accessories Pages 15-18).



**RTT-4444 500225**  
4-Way Fork Lift Pallet  
40-3/8" L x 40-3/8" W x 10" H  
Adds 6" to Overall  
System Height



SCAN ME



RTT-1049  
500637  
Cage Kit  
Up to 49" Tall



MODEL NO.	PART NO.	DESCRIPTION
RTT-1049	500637	Cage Kit - Up to 49" Tall
RTT-1067	500638	Cage Kit - Up to 67" Tall
RTT-1077	500639	Cage Kit - Up to 77" Tall
RTT-1085	500640	Cage Kit - Up to 85" Tall
RTT-1088	500641	Cage Kit - Up to 88" Tall

Add a Cage to Any New or Existing Tank System

See All Available Accessories Pages 15-18.



# CAGED TANK PACKAGES

Add seismic security to your tank system. Our 10-piece vertical cage secures the entire tank system to the stand base. Cages can be installed on new and existing systems. Vertical bars run between rib grooves and do not interfere with mounting plates. Additional caged combinations are available visit [www.rhinotufftanks.com](http://www.rhinotufftanks.com).

## ALL PACKAGES INCLUDE:

TANK

STAND BASE (NO LEGS)

10 PIECE CAGE

(LEGS SOLD SEPARATELY, SEE ALL ACCESSORIES ON PAGE 15)



RTT-1235  
500630  
120/180  
Gallon Tanks  
Package



RTT-1505  
500626  
310 Gallon  
Tank Package

MODEL NO.	PART NO.	DESCRIPTION	DIMENSIONS
RTT-1105	500622	80 Gallon Tank Package	36" L x 36" W x 19" H
RTT-1205	500623	120 Gallon Tank Package	36" L x 36" W x 28" H
RTT-1305	500624	180 Gallon Tank Package	36" L x 36" W x 40" H
RTT-1405	500625	225 Gallon Tank Package	36" L x 36" W x 50" H
RTT-1505	500626	310 Gallon Tank Package	36" L x 36" W x 66" H
RTT-1885	500627	80/80 Gallon Tanks Package	36" L x 36" W x 37" H
RTT-1888	500628	80/80/80 Gallon Tanks Package	36" L x 36" W x 55" H
RTT-1388	500632	80/80/180 Gallon Tanks Package	36" L x 36" W x 76" H
RTT-1225	500629	120/120 Gallon Tanks Package	36" L x 36" W x 55" H
RTT-1235	500630	120/180 Gallon Tanks Package	36" L x 36" W x 79" H
RTT-1335	500631	180/180 Gallon Tanks Package	36" L x 36" W x 79" H
RTT-1485	800633	80/225 Gallon Tanks Package	36" L x 36" W x 68" H
RTT-1425	500634	120/225 Gallon Tanks Package	36" L x 36" W x 77" H
RTT-1580	500636	80/310 Gallon Tanks Package	36" L x 36" W x 84" H
RTT-1435	500635	180/225 Gallon Tanks Package	36" L x 36" W x 89" H



**RHINO  TUFF TANKS**

# PORTABLE SYSTEMS

Portable Dispensing Systems keep fluids organized for quick dispensing and easily brings the fluids to your equipment. Heavy duty caster wheels have a load capacity of 3,960 lbs. Available in 45, 80, 120 and 180 gallon fully outfitted packages.

## ALL SYSTEMS INCLUDE:

TANK WITH 10-PIECE VERTICAL CAGE/BASE

8" X 2" CASTER WHEEL KIT - 2 RIGID & 2 SWIVEL WITH BRAKE (3960 LB LOAD CAPACITY)

3:1 PUMP WITH AIR FILTER REGULATOR

1/2" X 50' HOSE REEL

ELECTRONIC NON-PRESET DISPENSING METER

2-WAY BREATHER CAP



RTT-7452 500650  
45 Gallon Mobile Cart,  
Top Mount Pump



RTT-7102 500643  
80 Gallon Mobile Cart,  
Side Mount Pump



RTT-7202 500644  
120 Gallon Mobile Cart,  
Side Mount Pump



RTT-7302 500645  
180 Gallon Mobile Cart,  
Side Mount Pump

MODEL NO.	PART NO.	DESCRIPTION	DIMENSIONS
RTT-7452	500650	45 Gallon Mobile Cart, Top Mount Pump	36" L x 19" W x 55" H
RTT-7102	500643	80 Gallon Mobile Cart, Side Mount Pump	36" L x 47" W x 33" H
RTT-7202	500644	120 Gallon Mobile Cart, Side Mount Pump	36" L x 47" W x 42" H
RTT-7302	500645	180 Gallon Mobile Cart, Side Mount Pump	36" L x 47" W x 54" H



RTT-4740 500358  
8" Caster  
Wheel Kit



RTT-1111 500215  
45 Gallon Vertical Tank  
Narrow  
36" L x 18" W x 20" H

# RHINO TUFF TANKS ACCESSORIES

## STANDS AND DRIP TRAYS

Heavy Duty welded Steel Stands are designed to specifically match RTT's contoured tank shape. Stand legs are constructed of 1-1/2" Diameter zinc-coated schedule 80 pipe and easily accommodate bolt-on Drip Tray Kits. Welded foot flanges allow tank systems to be securely anchored to the floor. RTT-4000 Elbow Kits are easily attached to the front lip of the stand base, creating a convenient oil bar anchor at your fingertips.

MODEL NO.	PART NO.	DESCRIPTION
RTT-2000	500309	Stand Kit, 4" Legs With Foot Flange
RTT-2500	500310	Stand Kit, 18" Legs With Foot Flange
RTT-2100	500311	Stand Kit, 24" Legs With Foot Flange
RTT-2200	500312	Stand Kit, 36" Legs With Foot Flange
RTT-2300	500283	Stand Base Only - ULC Listed
RTT-2041	500228	4" Threaded Leg With Foot Flange
RTT-2181	500284	18" Threaded Leg With Foot Flange
RTT-2241	500285	24" Threaded Leg With Foot Flange
RTT-2361	500286	36" Threaded Leg With Foot Flange



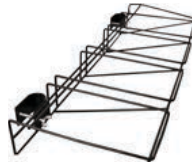
RTT-2100  
500311  
Stand Kit  
24" Legs with  
foot Flange



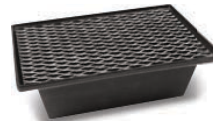
RTT-4000 500484  
Elbow Kit with  
Nut for Stand



RTT-3200 500025  
Drip Tray Kit  
(Holder, 4 Pans & Screens)



RTT-3000 500024  
Drip Tray Holder



RTT-3100 500026  
Drip Tray Insert with Screen



RTT-3705 500246  
5 qt. Transfer Jug

## SECONDARY CONTAINMENT

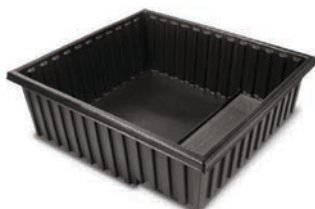
SPCC requires secondary containment vessels must be able to hold a minimum of 110% capacity of the largest primary tank within a stack or that of an individual primary tank.



MODEL NO.	PART NO.	DESCRIPTION	OUTSIDE DIMENSIONS (TOP)	INSIDE FOOTPRINT	HEIGHT
RTT-4042	500289	Containment Vessel - 150 Gallon	50" L x 67-1/2" W	39" L x 55" W	15"
RTT-4040	500014	Containment Vessel - 203 Gallon	48" L x 65" W	37" L x 57" W	20"
RTT-4043	500290	Containment Vessel - 300 Gallon	56-1/2" L x 94" W	45" L x 82" W	16"
RTT-4041	500015	Containment Vessel - 360 Gallon	56" L x 56" W	39" L x 39" W	42"



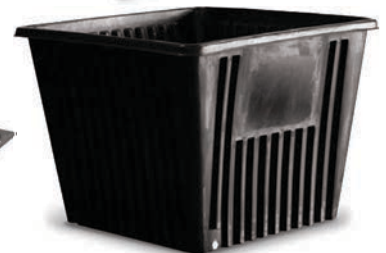
RTT-4042 500289  
Containment Vessel  
150 Gallon



RTT-4040 500014  
Containment Vessel  
203 Gallon



RTT-4043 500290  
Containment Vessel  
300 Gallon



RTT-4041 500015  
Containment Vessel  
360 Gallon



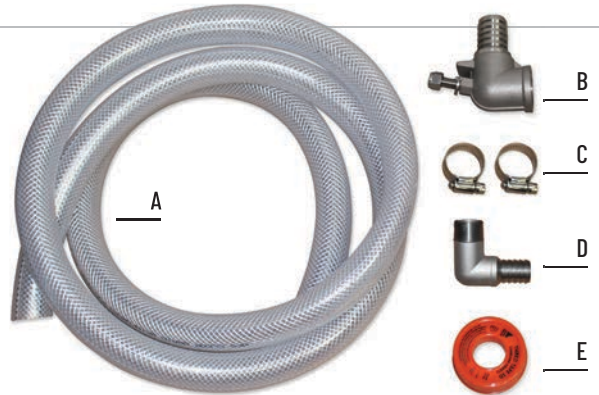
# RHINO TUFF TANKS ACCESSORIES - GRAVITY

## GRAVITY FEED ACCESSORY PACKAGES

Our 2-Tank, 3-Tank and 4-Tank Gravity Feed Accessory Packages have everything you need in one box! Barbed Fittings, Braided Tubing, Hose Clamps, Thread Sealant. Valves are sold separately to best match your needs.



SCAN ME



MODEL NO.	PART NO.	NUMBER OF TANKS	A 1" BRAIDED TUBING	B STAINLESS STEEL ELBOW KIT FOR STAND	C HOSE CLAMPS	D STAINLESS STEEL 1" ELBOW	E THREAD SEALANT
RTT-4092	500002	2	5 linear feet	1	2	1	1
RTT-4093	500003	3	9 linear feet	2	4	2	1
RTT-4094	500004	4	12 linear feet	3	6	3	1



## DISPENSE VALVES, TANK FILL AND VENT CAPS

RTT offers several quality valve and pump inlet kit options to best fit your needs.



RTT-4001  
500134  
Brass Spring  
Release Valve 1"  
UL Listed



RTT-4111  
500363  
Brass Spring  
Release Valve 1"



RTT-4002  
500133  
Poly Ball  
Valve Kit 1"



RTT-4136  
500352  
Brass Ball  
Valve Kit 1"



RTT-4137  
500353  
Stainless Steel  
Ball Valve Kit 1"



SCAN ME

RTT-2880  
500522  
Ground Fill Piping Kit  
2" with Check Valve  
(Gravity System Sold  
Separately)



RTT-2815  
500521  
Adapter Camlock  
1-1/2"



RTT-2822  
500534  
Adapter Bayonet  
Dry Break 2"



RTT-4005  
500017  
Desiccant Air  
Breather/Filter 1"



RTT-4012  
500194  
Flip Cap Hinged  
Cast Iron 2"



RTT-4032  
500054  
1-Way Breather  
Cap 2"



RTT-4034  
500214  
2-Way Breather  
Cap 2"

# RHINO TUFF TANKS ACCESSORIES - PUMP

Accessorize or build your own system. Many additional accessories are available at [rhinotufftanks.com](http://rhinotufftanks.com)

## MOUNTING PLATES AND BRACKETS



**RTT-4035 500087**  
Universal Piston Pump Bracket



**RTT-4038 500063**  
Universal Hose Reel Bracket



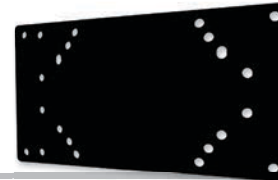
**RTT-4055 500191**  
Diaphragm Pump Bracket



**RTT-4025 500081**  
Side Mount Plate with Hardware



**RTT-4065 500553**  
Front Mount Plate with Hardware



**RTT-4044 500647**  
Top Mount Hose Reel Plate

## PUMPS AND DISPENSING METERS



**RTT-4018 500425**  
LD Series, 3:1  
**RTT-4019 500426**  
LD Series Pump, 5:1



**RTT-4077 500417**  
Mini Fire-Ball® 3:1  
**RTT-4188 500481**  
Fire-Ball® 5:1



**RTT-4084 500508**  
3/8" Diaphragm Pump  
**RTT-4079 500427**  
3/4" Diaphragm Pump  
**RTT-4074 500555**  
1" Diaphragm Pump



**RTT-4006 500421**  
Electronic Non-Preset Dispensing Meter EM Series

**RTT-4007 500422**  
Electronic Preset Dispensing Meter EM Series



**RTT-4106 500423**  
Electronic Manual Dispensing Meter SD Series

**RTT-4107 500420**  
Electronic Preset Dispensing Meter SD Series

## PORTABILITY ACCESSORIES



**RTT-4444 500225**  
4-Way Fork Lift Pallet  
40-3/8"L x 40-3/8"W x 10"H



**RTT-4740 500358**  
8" Caster Wheel Kit



**RTT-4510 500428**  
Oil Ace 24 Gallon Waste Oil Self Evacuation Cart 59 lbs  
18"Lx20"Wx40"H



**RTT-4413 500595**  
Oil King 25 Gallon Waste Oil Receiver 174 lbs  
24"Lx24"Wx45"- 69"H



**RTT-4011 500419**  
Hose Reel  
1/2"x50'ft Hose

# RHINO TUFF TANKS ACCESSORIES - DEF

Accessorize or build your own system. Many additional accessories are available at [rhinotufftanks.com](http://rhinotufftanks.com)

## DEF 12 VDC AND 120 VAC PUMPS

Built with an electric motor, auto-shutoff timer and no need for dynamic seal which has created a reliable industrial pump with self-priming capabilities. 3/4" hose tail connection, On/Off Switch, 6 foot cable with socket and 20 minute duty cycle.



**RTT-7101 500324**  
DEF Pump 12 VDC  
(7-9 GPM)



**RTT-7404 500375**  
DEF Pump 120 VAC  
(7-9 GPM)

## DEF SYSTEM COMPONENTS AND ACCESSORIES



**RTT-7020 500327**  
DEF Dispensing Hose 3/4"  
(sold in linear foot increments)



**RTT-7725 500872** DEF Hose Reel 3/4" x 25 ft.  
**RTT-7750 500373** DEF Hose Reel 3/4" x 50 ft.



**RTT-7200 500326**  
SS Nozzle with  
Automatic Shut-Off



**RTT-7040 500331**  
Nozzle Support



**RTT-7001 500320**  
Poly RSV Valve  
2.5" Buttress  
and Downtube  
(cut to length)



**RTT-7030 500329**  
DEF K24 In-Line Meter



**RTT-7010 500322**  
Poly Dispense Coupler



**RTT-7015 500325**  
Poly Elbow 3/4" Barbed  
x 1" Female BSP



**RTT-7252 500609**  
ADAPTER DEF 2.5" FB X  
2" MNPT POLY



**RTT-7002 500655**  
RSV Valve 2" NPT

## CUSTOM SYSTEM BRANDING

Brand your system with your company logo or for quick fluid identification.



**RTT-4083 500317**  
4"x6" Blank Placard  
Assembly for Valve



**RTT-4076 500076**  
18"x24" Blank Placard





For Sales, Product or Pricing Information:  
call **630-527-9933** email [rhinotuff@walshlong.com](mailto:rhinotuff@walshlong.com)

## INDUSTRY APPLICATIONS

Eliminate the hassle of handling messy 55 gallon drums or bulky steel tanks in your liquid storage area. Rhino Tuff Tanks systems will help transform your area into a cleaner, more efficient work space by allowing multiple fluids to be stacked vertically.

Examples of specific uses for Rhino Tuff Tanks include, but are not limited to:

### AUTOMOTIVE

Antifreeze  
Lubricants  
Transmission Fluids  
Washer Fluids  
Synthetic Oils

### FARM / RANCH / AGRICULTURAL

Chemicals  
Herbicides  
Liquid Feed  
Pesticides  
Potable/Non-Potable Water

### CHEMICAL

Adhesives  
Detergents  
Dyes  
Syrups  
Other Food Grade Liquids

### INDUSTRIAL

Cutting Fluids  
Degreasers  
Detergents  
Hydraulic Fluids  
Lubricants



Rhino Tuff Tanks systems have been certified to be in compliance with UL-2152 Nonmetallic Bulk Containers for the Storage and Dispensing of Combustible and Non-combustible Liquids. Please contact Rhino Tuff Tanks, LLC for further certification information.

Resins used in the construction of Rhino Tuff Tanks are listed with the NSF as meeting the NSF 51 requirements and meet or exceed specifications contained in FDA Regulation 21 CFR 177.1520 (2) 3.1 and may be used as an

article or as a component of articles for use in contact with food, subject to any limitations of the regulations.

Any use of Rhino Tuff Tanks with incompatible fluids, sealants, hoses, fittings, valves or any other incompatible accessories may cause a tank failure and will immediately void any and all manufacturer's warranty associated with the product(s) supplied by Rhino Tuff Tanks, LLC.



[www.rhinotufftanks.com](http://www.rhinotufftanks.com)

Rhino Tuff Tanks, 411 West Congress Street, Maple Lake, MN 55358 877-RU-TUFF-2 (877-788-8332)

©COPYRIGHT 2021 RHINO,LLC ALL RIGHTS RESERVED